

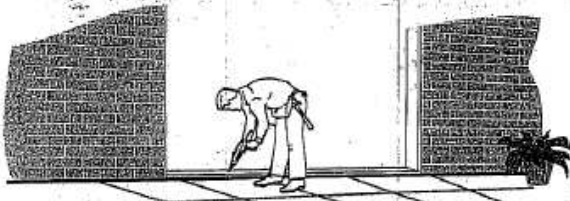
## OX-XO, OXO Patio Door Installation Instructions



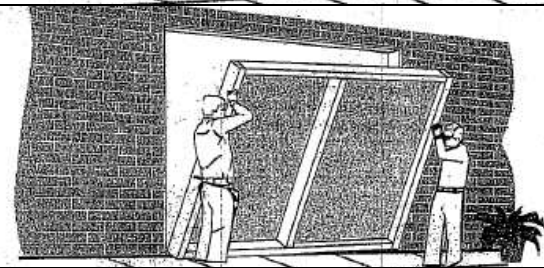
Handle kit and instructions (if not ordered pre-installed) are stapled to the side of the door frame.

Remove all packaging including the plywood skid plates stapled to the bottom of the door frame and lift handles installed to the side of the frame.

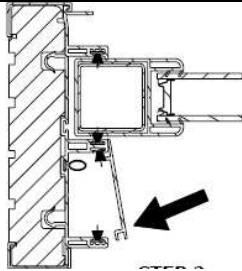
The bug screens are packaged and optionally shipped separately.



Apply 3 thick beads of caulking along the floor over the entire width of the rough opening. Note: A level sill is critical to the performance of the door. Use floor levelling compound or wood shims to insure a flat and level surface prior to setting the door.



Place door unit in the opening - sill first (make sure there is a good caulking seal between the floor and the door sill).

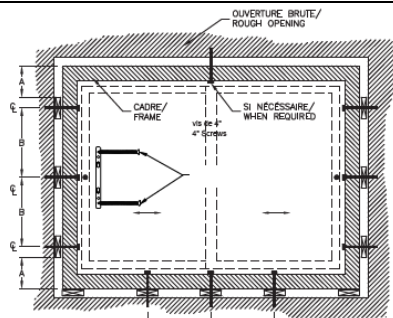


Top view of side jamb and fixed door.

Remove the side cover on the fixed door panel(s) to allow fastening of the frame to the rough opening. Re-install the side cover after the door frame has been fastened to the rough opening. A soft mallet may be required to get the cover to clip into place.

The operating door side on an OX-XO model does not have a side cover. Install included plugs into the pre-drilled holes after the door frame is fastened within the rough opening.

Note: 4" long screws (not included) are to be installed centered within the channel once the door frame is in final position and shimmed.



MATÉRIEL/ MATERIAL	POSITION SUR LE CADRE/ POSITION ON FRAME	
	MIN A*	MAX B
PVC	200mm (8")	380-600mm(15-24")
WOOD	50mm (2")	800mm (32")

\*LORSQUE LA COULEUR DU FINI EXTÉRIEUR EST FONCÉE, AJOUTER 50MM (2") À LA DIMENSION "A" CI-DESSUS  
\*WHEN EXTERIOR FINISH IS DARK COLOURED, ADD 50mm (2") TO THE ABOVE INDICATED "A" DISTANCE.

### IMPORTANT:

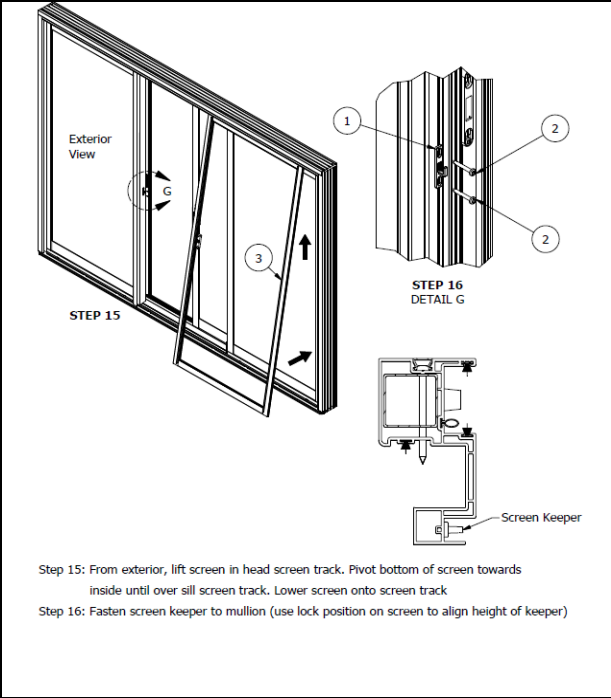
Handling and installation of this product under temperature below freezing point (0°C/32°F) may cause serious damage to the product. **Handle with care.**

#### Installation:

1. The dimension of the opening must exceed the exterior dimension of the door frame by 19mm (3/4") in width and by 10mm (3/8") in height.
2. When installing, this product must be squared and levelled.
3. Wedge the frame as shown in the sketch, that is: three wedges between the structure and the door jambs and one wedge between the structure and the center of the header, as well as one at the centre of the door sill.
4. Make sure the header, the door sill and the door jambs are straight.
5. Fill the space between the door frame and the structure with insulation. Beware: excessive insulation may warp the frame.

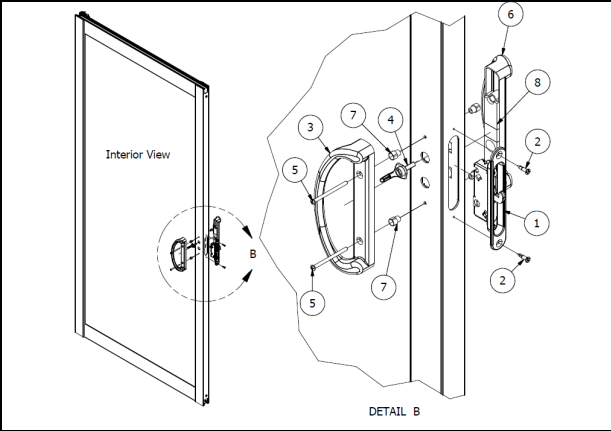
Shim door and install 4inch long screws (not included) as shown.

**CAUTION:** Do not over shim as this will cause the unit to bind!



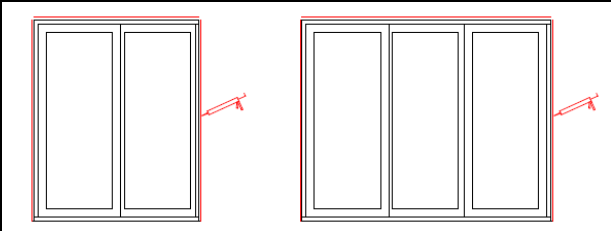
Install the bug screen as shown (OXO model shown).

The bug screen roller operation can be adjusted by tightening or loosening angled set-screws located at the sides of each bug screen.



Install handle assembly (a separate and more detailed instruction sheet is included with the handle kit)

Note: The handle assembly is optionally pre-installed.



Seal the joints of the entire exterior perimeter of the door and rough opening (OX-XO model shown on left, OXO model shown on right).